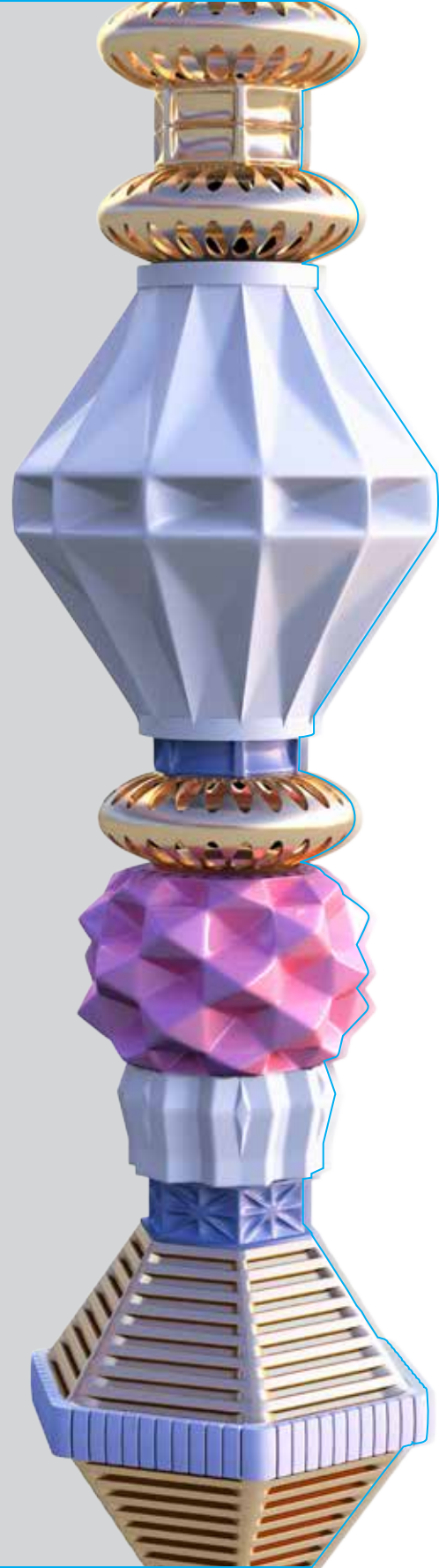


arte

Mont Kiara



THE PALAIS DROP-OFF

ENTER THE ARTE WORLD.

Where dreams morph
into a fantastical reality.
Experience limitless
living; experience Arte.



REDEFINING MONT KIARA

Located on a prime stretch of Mont Kiara, Arte Mont Kiara will be part of KL Metropolis; an international trade and exhibition hub hosting the largest convention center in South East Asia.

MITEC

MATRADE

arte
Mont Kiara

PUBLIKA

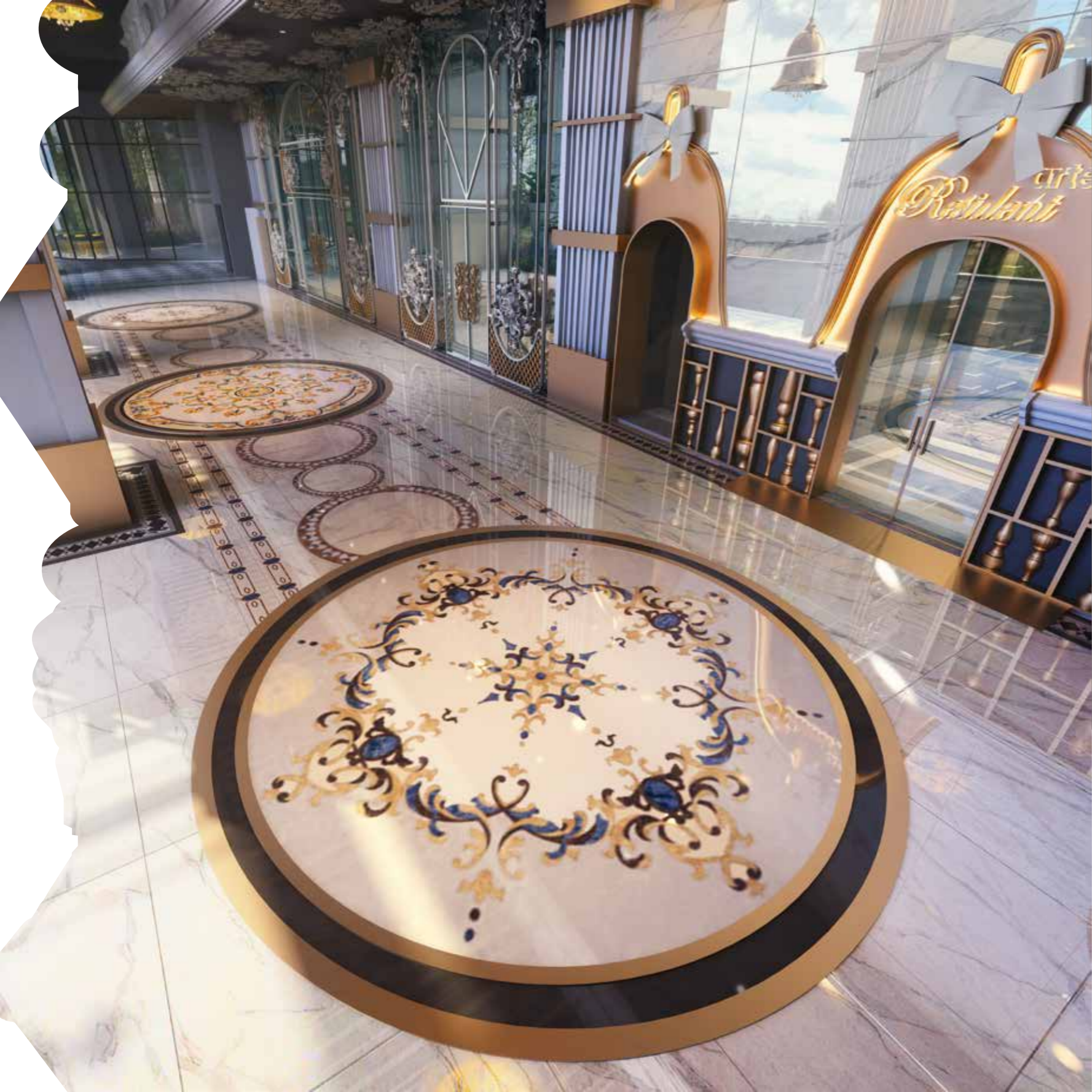




THIS IS THE FUTURE OF ARTE

Where rules are re-written and conventions are broken. It is the epitome of the Arte French-retro lifestyle concept.





AN EXQUISITE FRENCH RECEPTION.

The Grand Marble Entryway with its resplendent gold chandelier bells beckon you as you enter the French-retro Lift Lobby in all its serene splendour.



**FRENCH
INSPIRATION.
RETRO VIBRATION.**

The Tower 2 Lobby's artfully pieced mosaic tiles form a baroque floral pathway guiding visitors under chandelier bells, echoing luxury and emanating French-retro finesse.



**BUOYANTLY
BAROQUE.**

Every inch of space is given an immaculate finishing for an extraordinary experience including the Tower 1 Lobby.



THE HIGH LIFE UP IN THE SKY.

The Jacuzzi Pods serve as a retreat for those in need of quality relaxation. Wade in the wonders of modern design while you soak in the majestic view of the Mont Kiara skyline.



FLOATING BUTTERFLY GARDEN



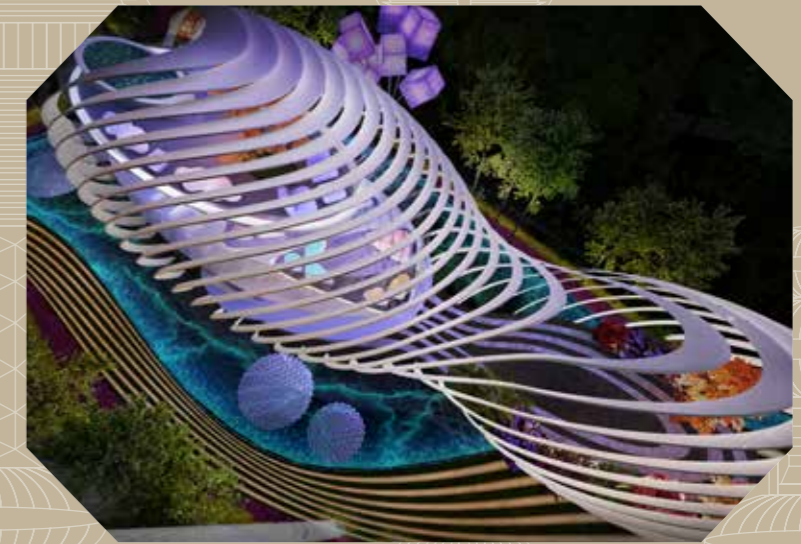
LOUNGE IN LUXURY.

Be it at the Floating Butterfly Garden on the 41st floor, complete with its impressive mesh architecture adorned with golden butterflies, or at the eclectic Outdoor Lounge at Tower 2; lounge in luxury at every turn.



THE MIRROR BAR

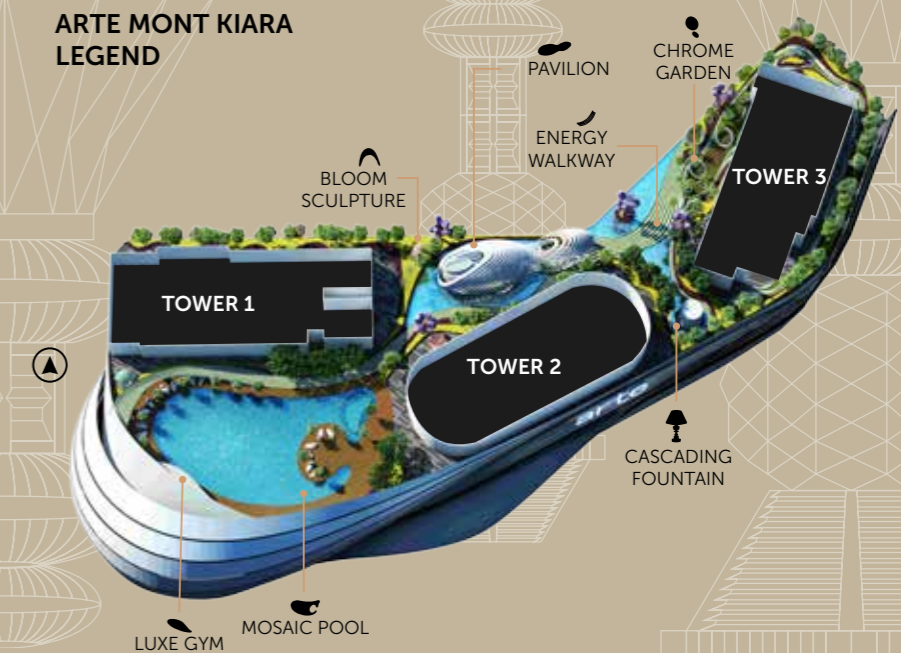
Mirrored chandeliers reflect a kaleidoscope of saturated hues from stained glass windows. Sip your drink under the gold lined Neo-gothic domes in Arte Mont Kiara's very own speakeasy; the Mirror Bar.



CRÈME DE LA CRÈME OF DESIGN

Within the iconic Pavilion the Diamond Lounge awaits. Lavishly designed and immaculately detailed, the 3-tiered entertainment space creates a fantasy realm. Visitors will be immersed in French decadence; the crème de la crème of design.

ARTE MONT KIARA LEGEND



THE MOSAIC POOL

The Mosaic Pool and its custom gradient flooring, from warm sand tones into the marvellous blues, are reminiscent of the idyllic French Riviera.





THE LUXE GYM

The Luxe Gym powered by Technogym; the best of what fitness has to offer in the splendour of a spacious pod structure with French-retro finishing's. Experience working out in a luxurious environment and ambience, a first of its kind.



HOMES THAT TRANSCEND TRENDS

The height of duplex units provide an ideal canvas for your own sense of French-retro flair. Designer duplexes featured here have been custom made by Nusmetro's cutting edge design team to match Arte Mont Kiara's aesthetic perfectly.



03 7955 6676

info@nusmetro.com

www.nusmetro.com

Developer: MONT KIARA SUITE SDN BHD Reg No. 200101007361 (543117-D)
Formerly known as Nusmetro Property Sdn. Bhd.

NUSMETRO SALES GALLERY

Unit 102-106, Block E, Phileo Damansara 1,
No.9 Jalan 16/11, Off Jalan Damansara,
46350 Petaling Jaya, Selangor Darul Ehsan.

• Developer's License.: 14344-1/05-2020/01895(L) • Sales & Advertising Permit No.: 14344-1/05-2020/01895(P) • Validity Date: 14/5/2019-13/5/2020 • Approved Layout Plan No.: DBKL-JPRB-04-B1-003 • Authority Approving Building Plan: DBKL • Building Plan Reference No.: BP T2 OSC 2015 1865 • Land tenure: Leasehold 99 years (Expiry 11 August 2114) • Encumbrances: United Overseas Bank (Malaysia) Bhd • Expected Date of Completion: September 2020 • Project Name: Arte Mont Kiara • Product Type: Service Apartment • No. of Units: 134 units • Price RM 839,000 (min) – RM 1,600,000 (max). *All images and illustrations are artists' impressions and are subject to changes at the developers' discretion.*

All images and illustrations are artists impressions and are subject to change at the developer's discretion.